



INSTALLATION GUIDE

CTS Turbo Audi RS3 Throttle Body Inlet



20630 Mufford Crescent, Unit #309
Langley, British Columbia V2Y 2V9

www.CTSTURBO.com

WHAT IS INCLUDED

1. CTS throttle body inlet
2. CTS throttle body spacer
3. CTS charge pipe
4. Installation hardware



NOTES

Vehicle used in this guide is a 2018 Audi RS3. Always make sure the car is safe to work on. Do not work on a hot motor. We do not accept any liability for incorrect installation or damage during the install.

STEP 1

Remove the engine cover.



STEP 2

1. Loosen both clamps connecting the inlet and charge pipe.

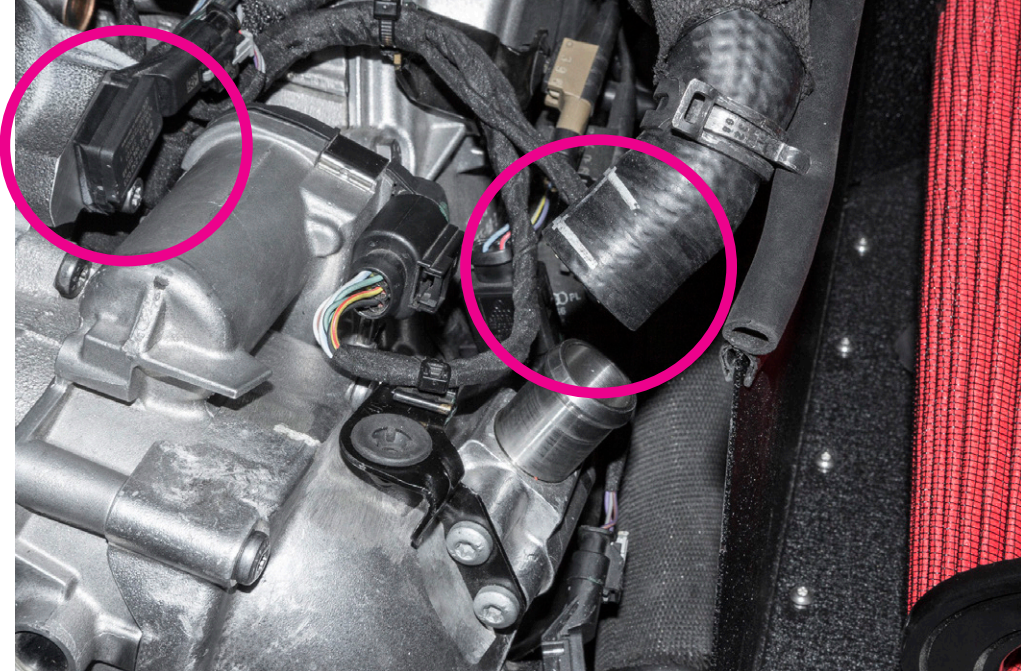
2. Remove the OE charge pipe.

*We removed the under tray to access the charge pipe from underneath of the car



STEP 3

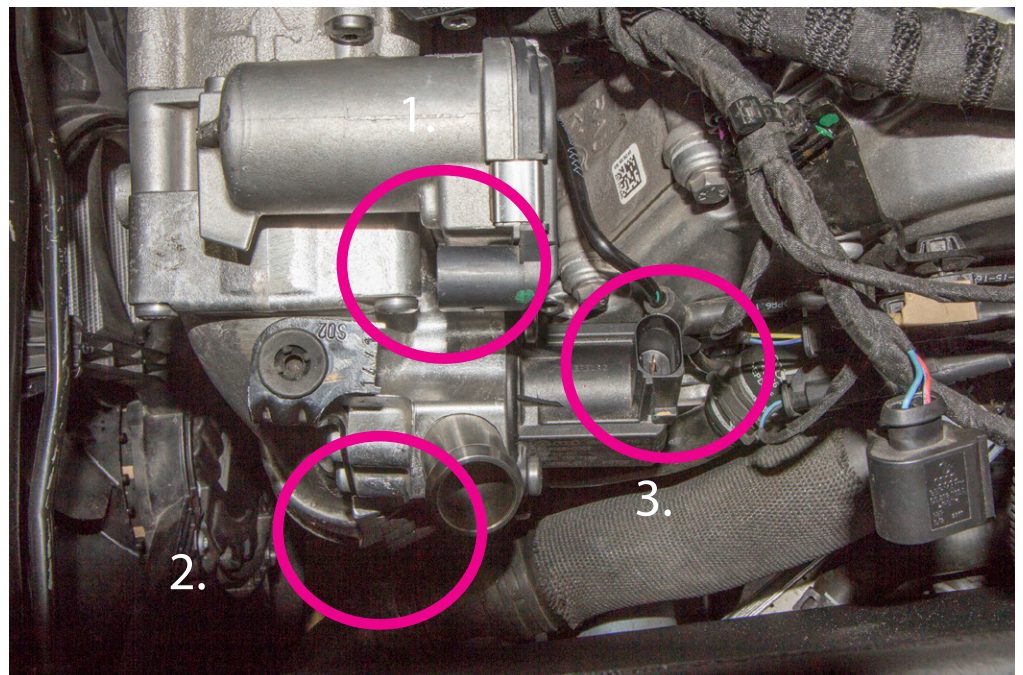
1. Disconnect the recirculation hose
2. Remove the Manifold absolute pressure electrical connector



STEP 4

Disconnect the following electrical connectors:

1. Drive by wire
2. Pre-throttle body pressure
3. Diverter Valve



STEP 5

Remove the torx bolt the holds
the bracket to the manifold

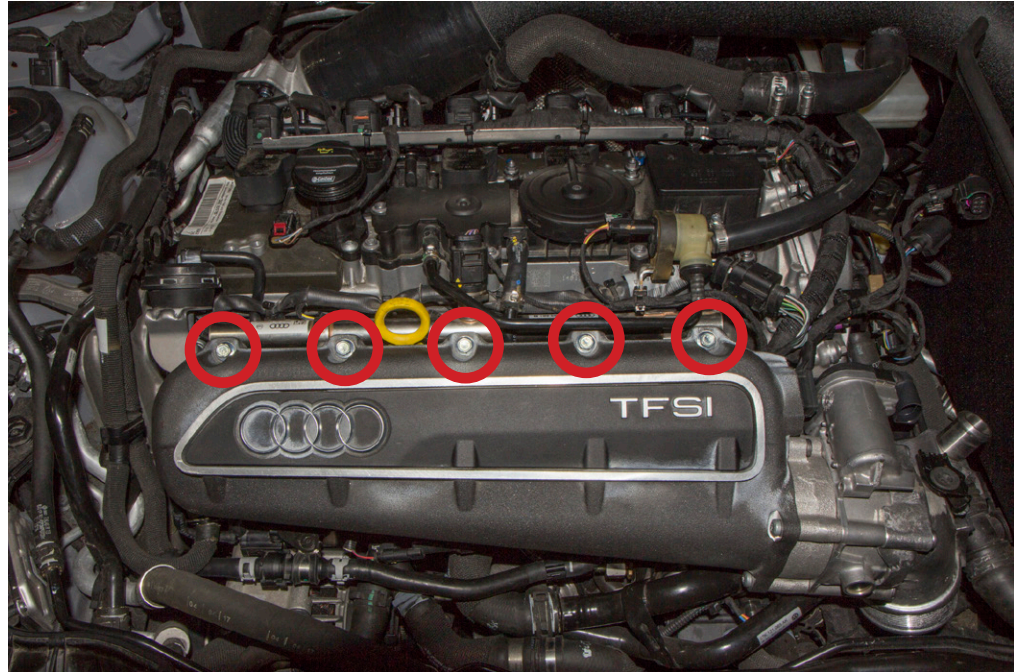
**STEP 6**

Remove the solenoid
attached to the bottom of
the intake manifold



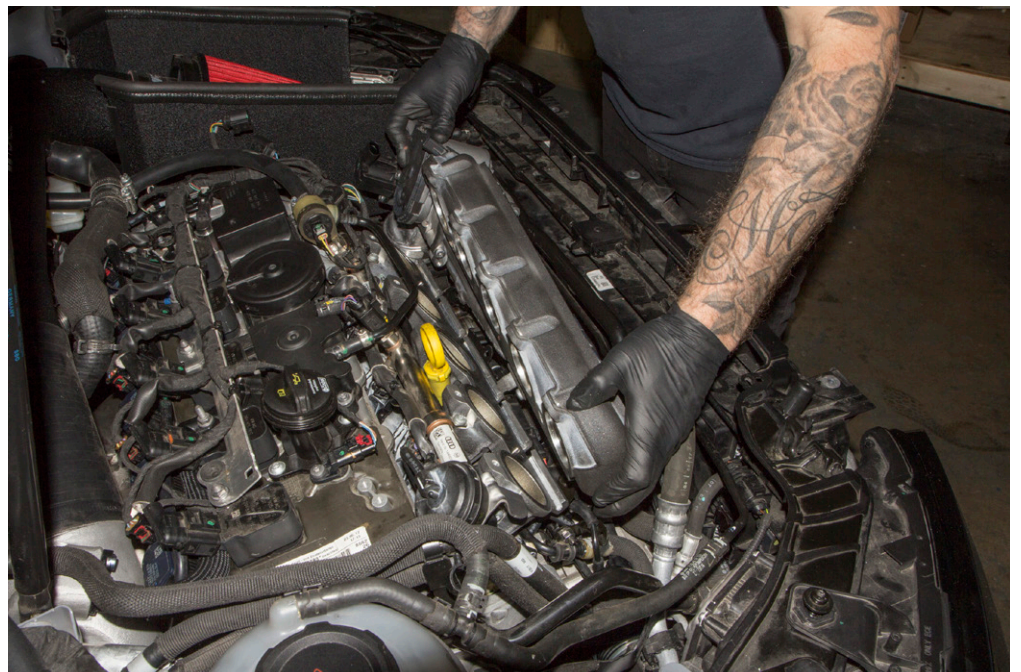
STEP 7

Remove the 5 bolts holding
the manifold to the motor



STEP 8

Remove the manifold from
the motor



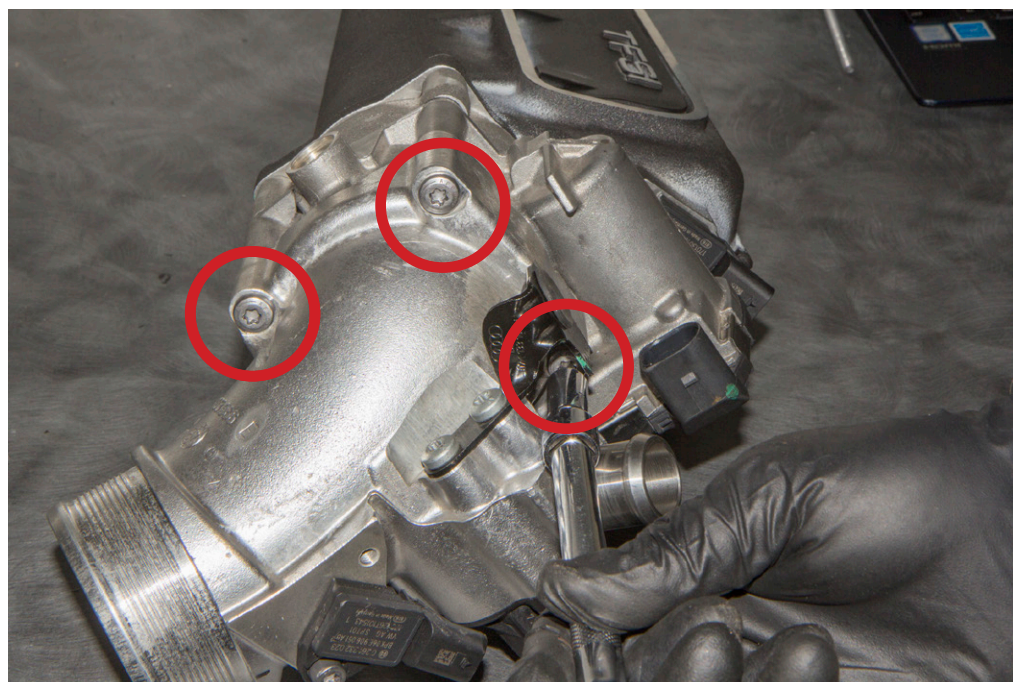
STEP 9

On the underside of the manifold remove the torx bolt shown



STEP 10

Remove the 3 torx bolts from the inlet



STEP 11

You may now remove the throttle body and inlet from the manifold.

Make sure to keep the gasket



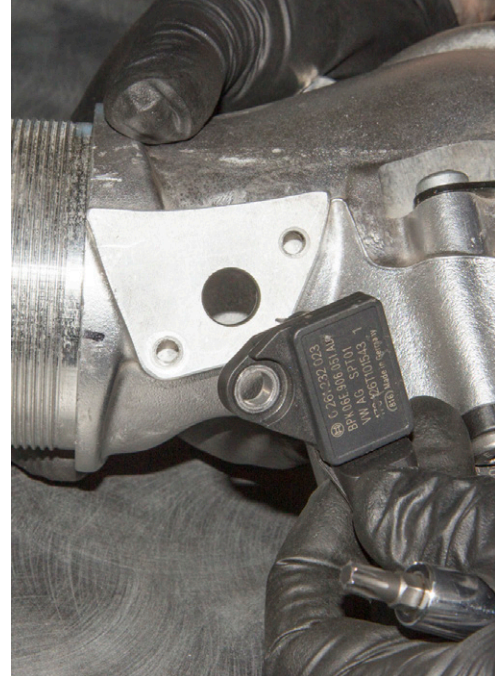
STEP 12

Remove the throttle body from the inlet by carefully pulling them apart



STEP 13

Remove the pre-throttle body sensor



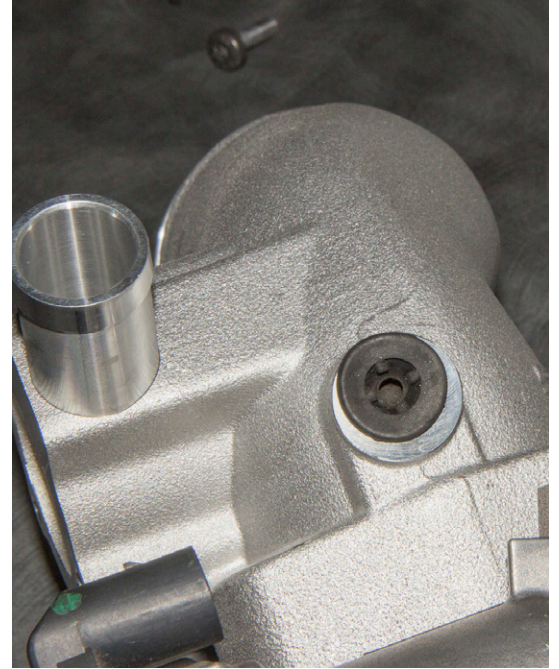
STEP 14

Remove the diverter valve



STEP 15

Remove the grommet from the OE inlet bracket and install on to the CTS throttle body inlet



STEP 16

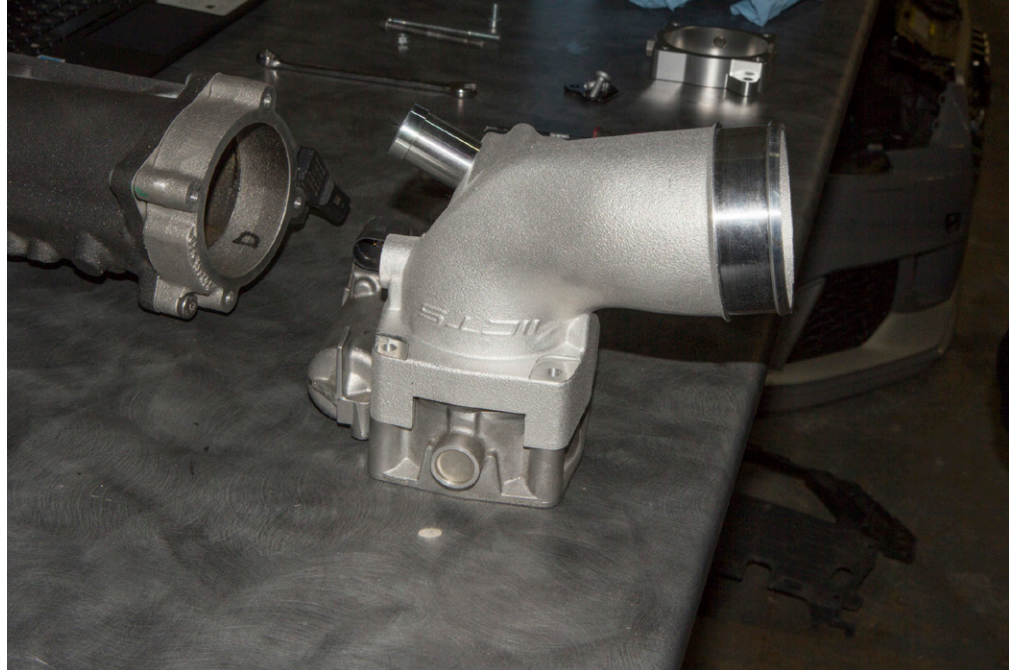
Ensure the oring is seated correctly on the CTS inlet



STEP 17

You may now join the throttle body and inlet together.

It will be a tight fit

**STEP 18**

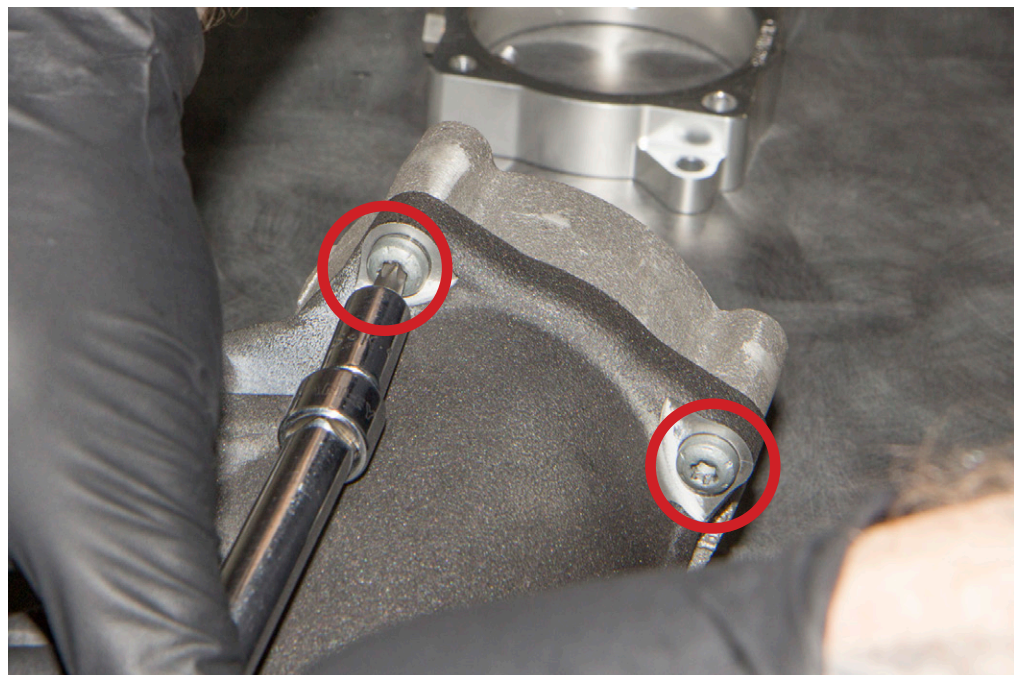
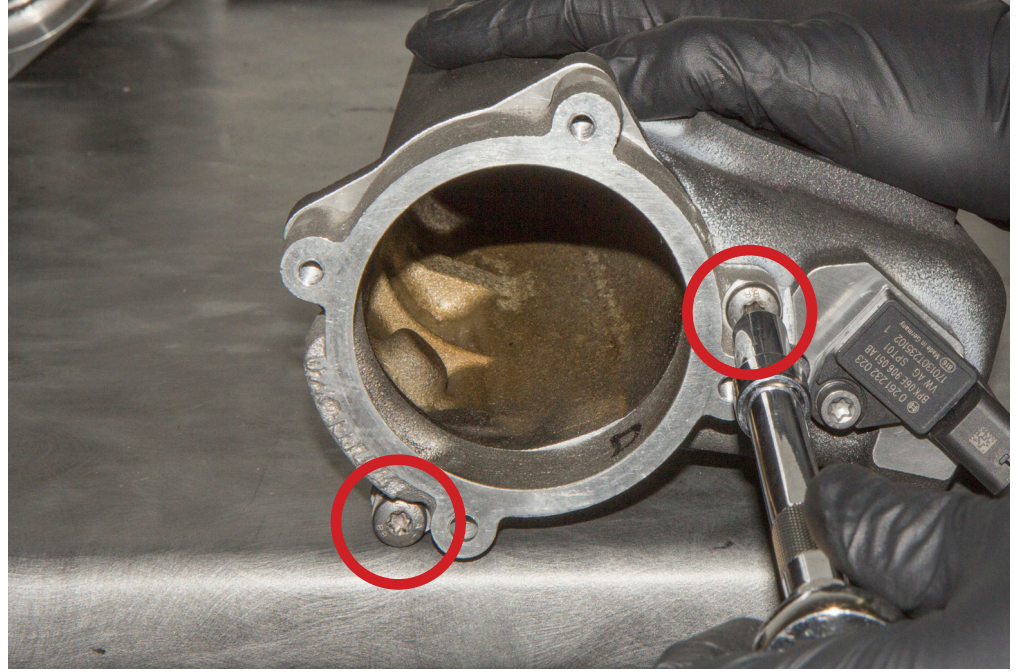
1. Install the pre-throttle body sensor with the allen bolt provided.

2. Install the diverter valve



STEP 19

Remove the 4 trox bolts holding the OE spacer to the manifold.



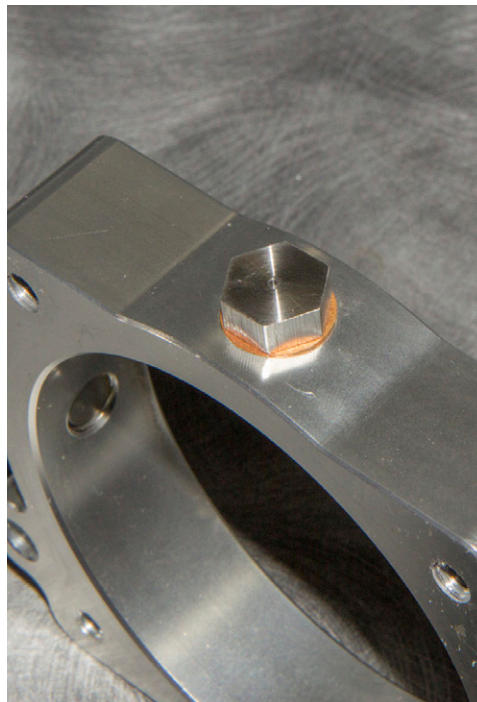
STEP 21

Remove the spacer and gasket



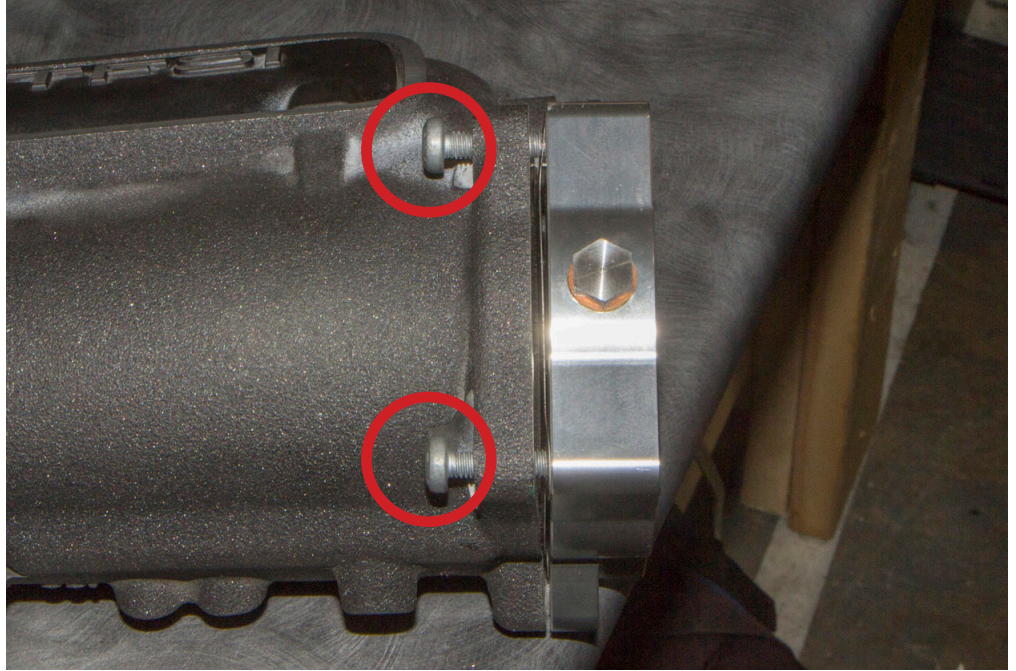
STEP 22

Install the methanol bungs with the provided hardware to the CTS throttle body spacer

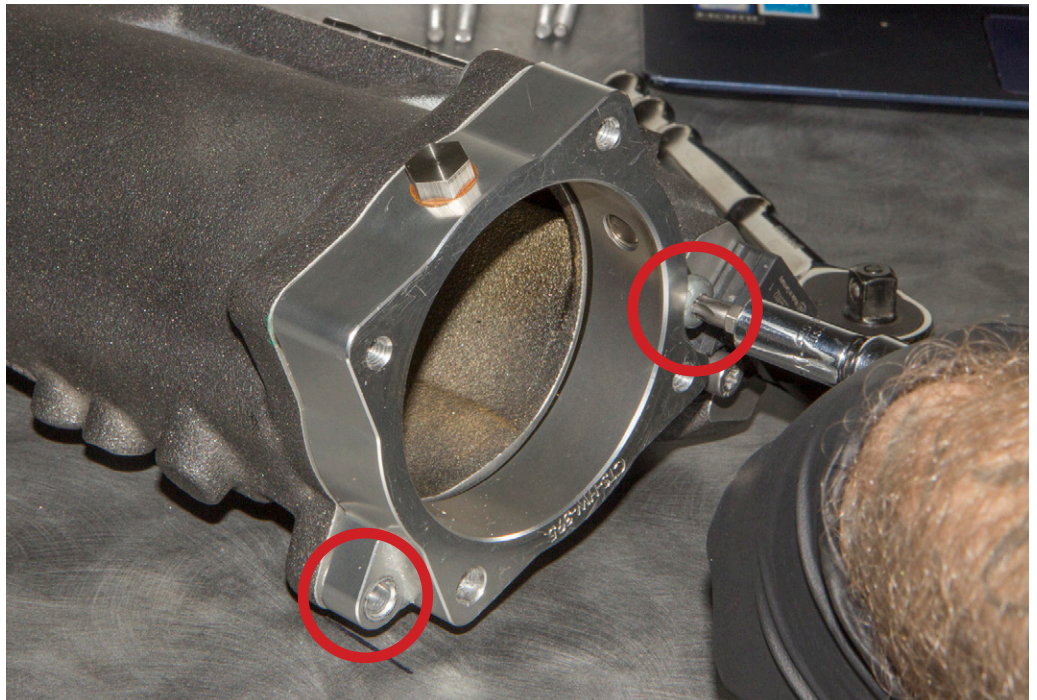


STEP 23

Install the gasket and CTS spacer on to the manifold



STEP 24



STEP 25

On the underside of the manifold install the long OE bolt through the spacer



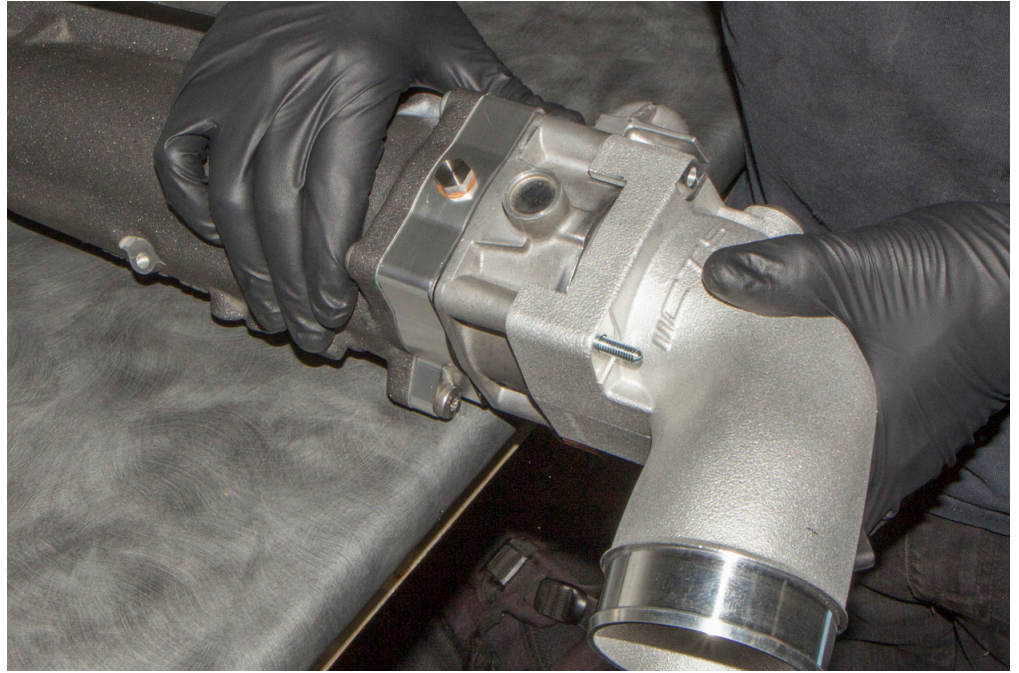
STEP 26

Install the provided threaded rod and gasket.



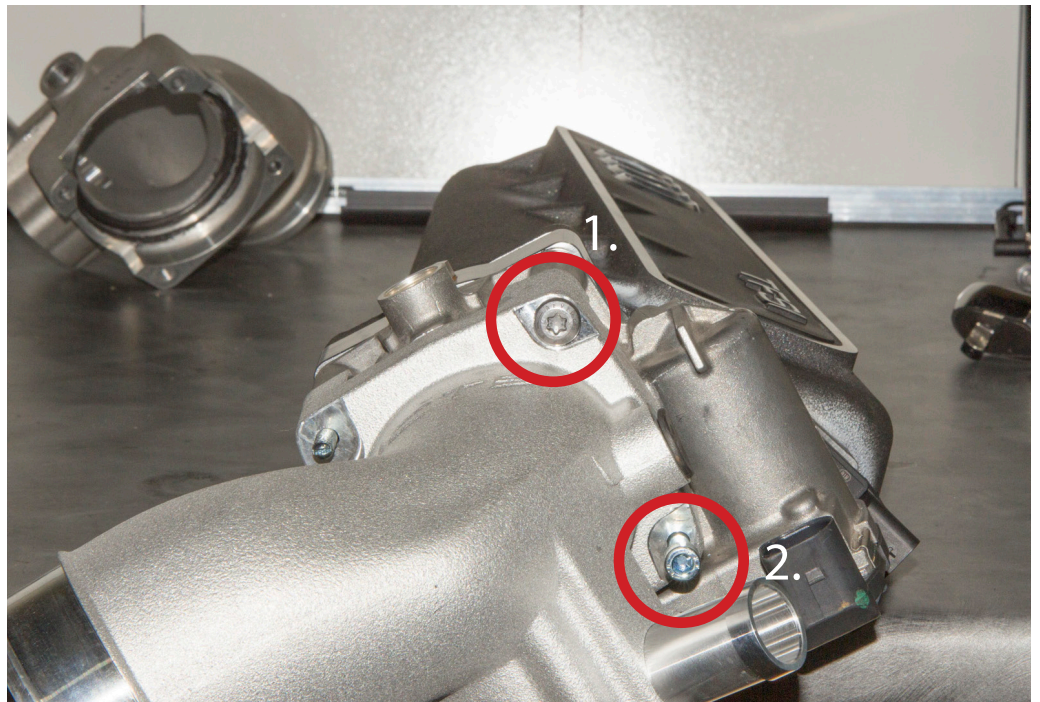
STEP 27

Install the CTS throttle body inlet



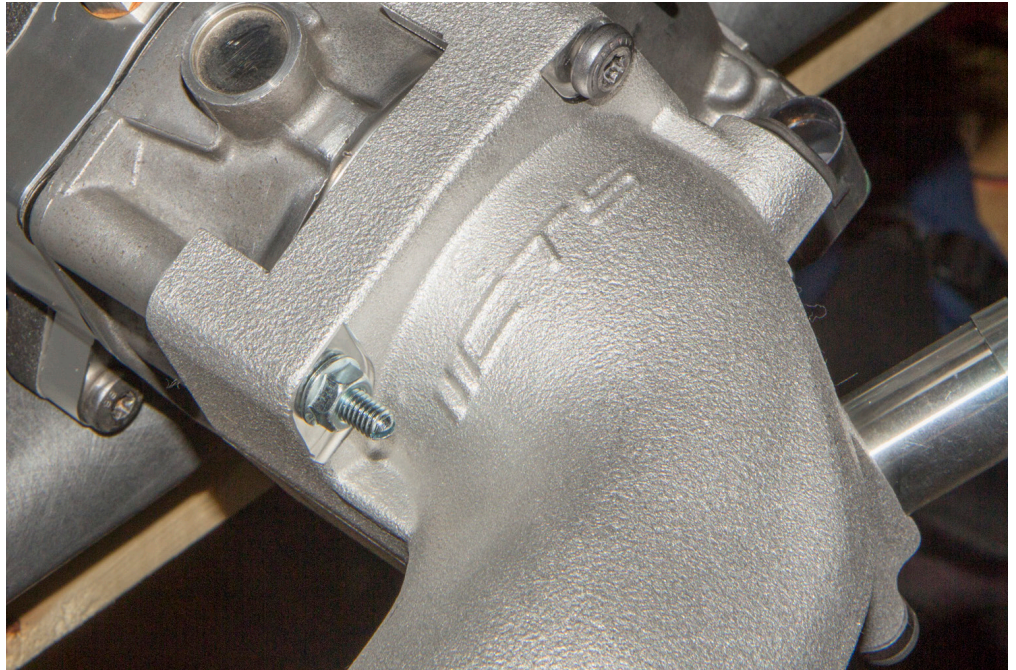
STEP 28

1. Install OE trox bolt
2. Install provided allen bolt



STEP 29

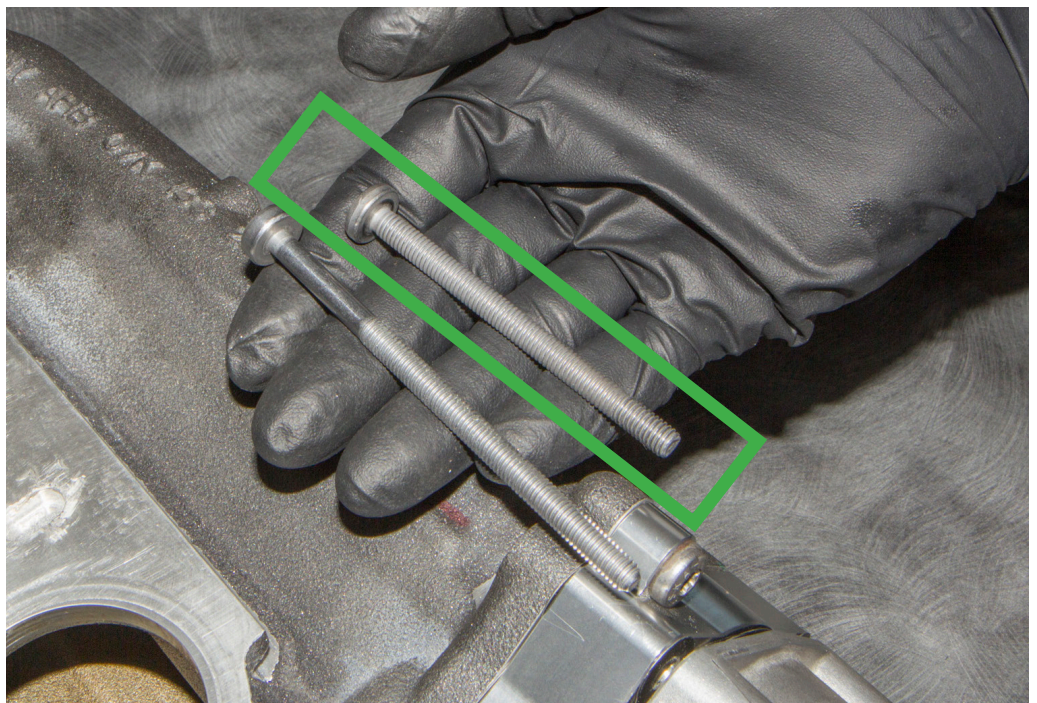
Install the provided nut to the threaded rod



STEP 30

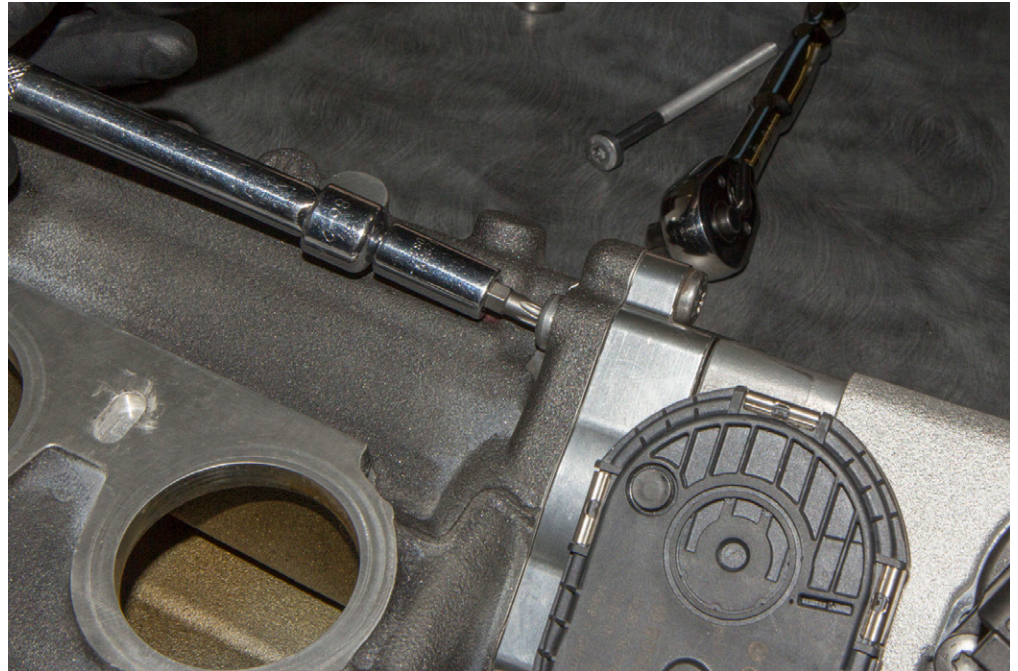
There are 2 OE trox bolts.

We need to use the shorter bolt to install on the manifold, spacer and throttle body inlet.



STEP 31

Install the torx bolt



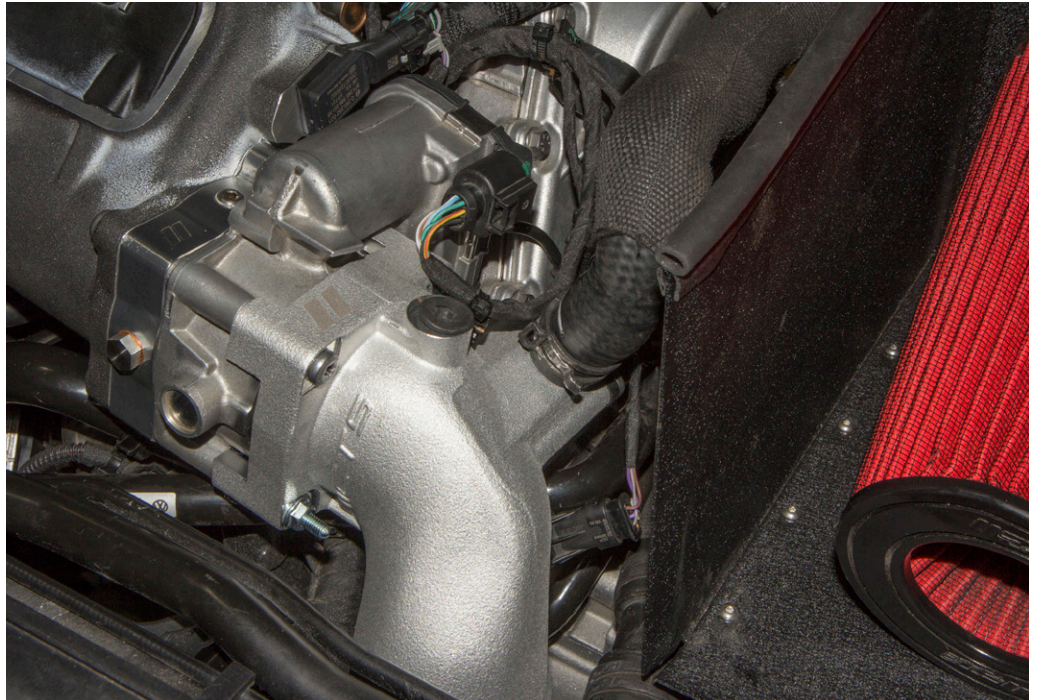
STEP 32

1. Reinstall the manifold
2. Install the solenoid
3. Reinstall the bracket



STEP 33

1. Reconnect the manifold absolute pressure, drive by wire, pre-throttle body pressure, diverter valve electrical connectors
2. Reconnect the recirculation hose



STEP 34

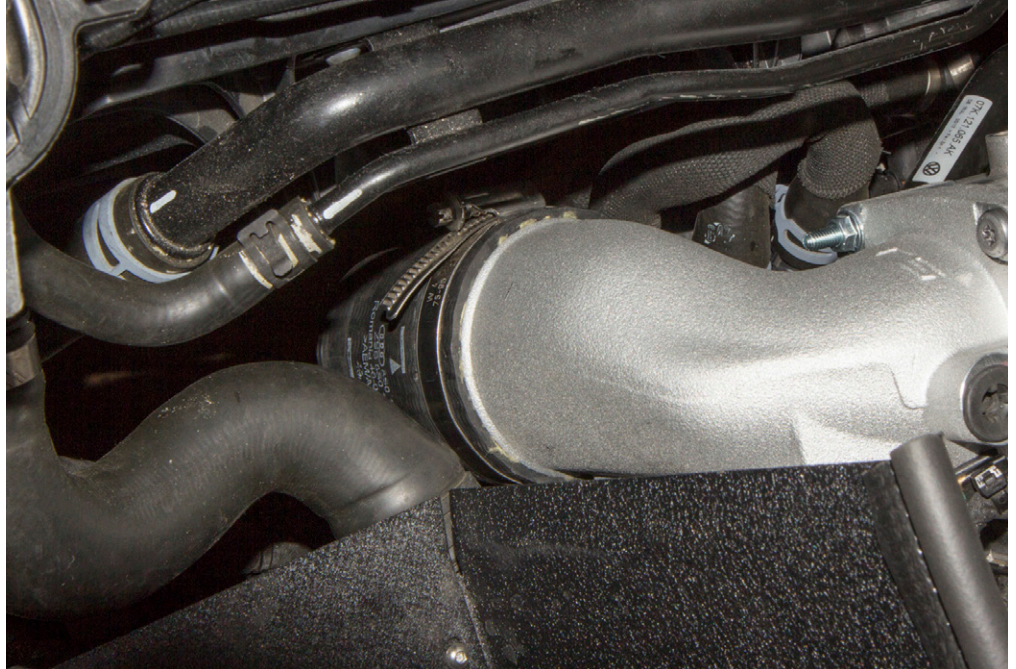
Next install the pipe plugs into methanol bungs on the charge pipe

*Do not over tighten



STEP 35

Install the silicone coupler and upper clamp

**STEP 36**

1. Install the charge pipe and OE silicone hose

2. Make sure to check and tighten all clamps



STEP 35

Put the engine cover back on
and you are done!



